

make:good



West Ham Park

Old Nursery Site

make:good



Timeline





**Create more public
open space in West
Ham Park on 50%
of the site**



**Generate income for
West Ham Park charity
by building housing on
50% of the site**

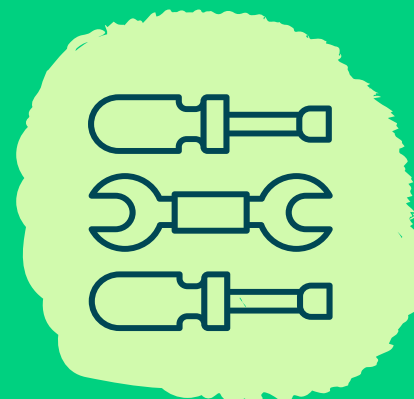


**Create a new
community facility
for the whole
neighbourhood**

What are we trying to achieve?



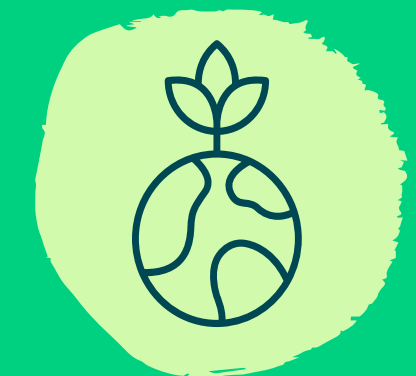
**Bring this part
of the park
back into use**



**Pay for
improvements to
the whole park**



**Improve
biodiversity in
West Ham Park**



**Have the best
environmental
credentials**

Stakeholder Map

- 1. West Ham Church of England Primary School
- 2. Selwyn Primary School
- 3. St Bonaventures
- 4. Stratford School Academy
- 5. Park Primary School
- 6. Newham College (Stratford campus)
- 7. Newham Community Project

- 8. Friends of West Ham Park
- 9. West Ham Air Cadets
- 10. 11th Newham Scouts

- 11. Masjid Abdul-Aziz Bin Baz
- 12. All Saints West Ham Church
- 13. West Ham Baptist Tabernacle
- 14. St Antony's Parish, Forest Gate
- 15. Islamic Centre Upton Park
- 16. St Matthew's Church, West Ham
- 17. Foursquare Gospel Church
- 18. Glad Tidings Free Pentecostal Church
- 19. Faizan e Madina London
- 20. Ramgarhia Sikh Gurdwara

- 21. Clapton Community FC
- 22. Newham Boys Boxing Club
- 23. Tennis Come True East London

- 24. The Grove Street Food Market
- 25. Floron Rest Home
- 26. Beechwood Residential Home

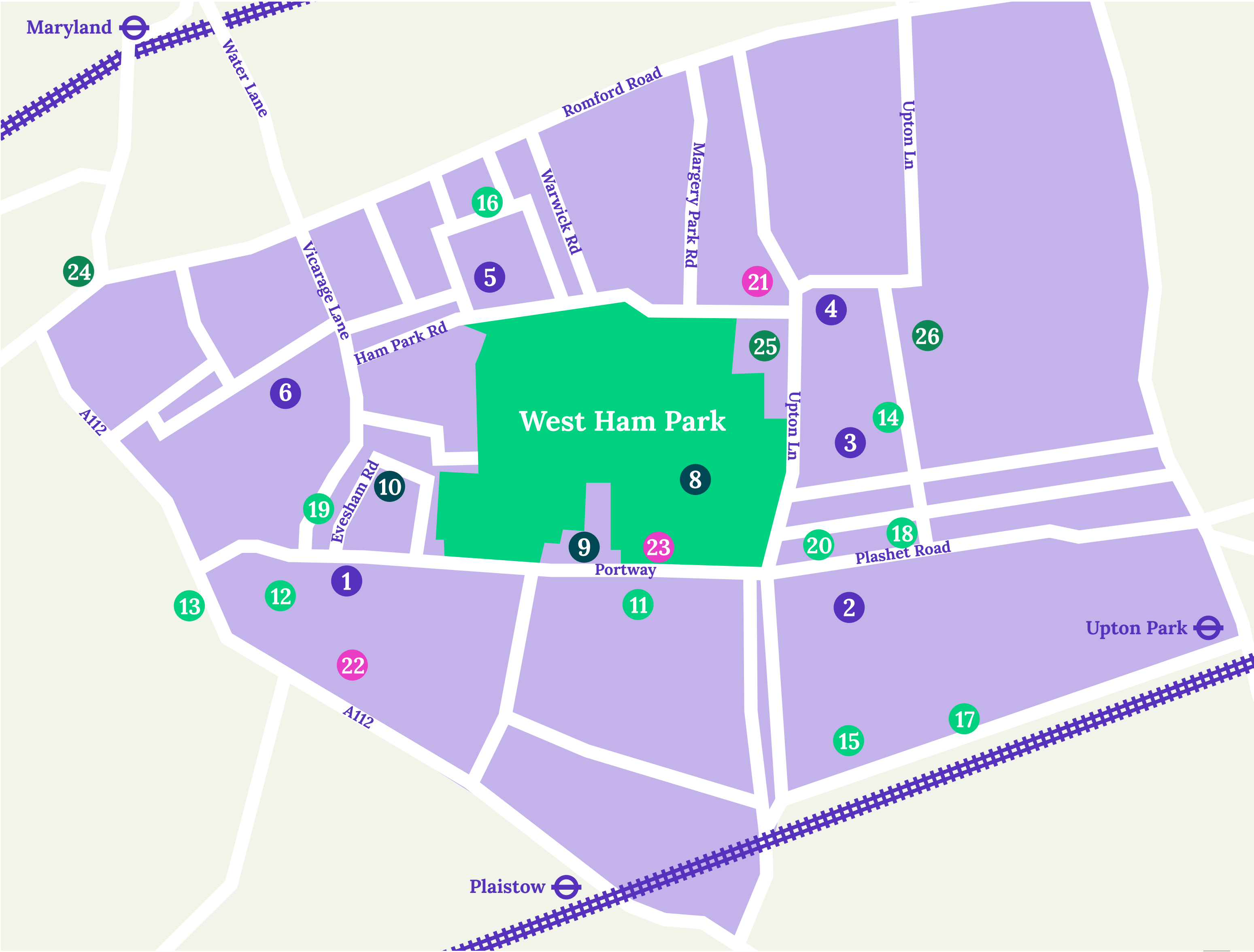
Schools

Organisations

Religious Institutions

Sports

Other





Pop-ups



Workshops



Drop-in



Tag-on Events

General

- What works well about West Ham Park?
- What could be improved about West Ham Park?
- What opportunities could come from developing the old nursery site?
- What concerns do you have about developing the old nursery site?
- Any other comments?



Stakeholder segments

Questions for organisations & schools

Step 1:

- What do you use West Ham Park for?
- What would you like to use West Ham Park for?

Step 2:

Invite to a stakeholders workshop/ drop in to cover the general questions.



What happens with the feedback? (need to separate Nursery site & wider park feedback)

West Ham Park

1. Collect and analyse it all
2. Summarise the ideas for improving the park
3. Create a draft masterplan for improving the park
4. Share it in the autumn and get more feedback

Nursery Site

1. Summarise opportunities & concerns for the nursery site before the design team start their work
2. Share it in the autumn and get more feedback